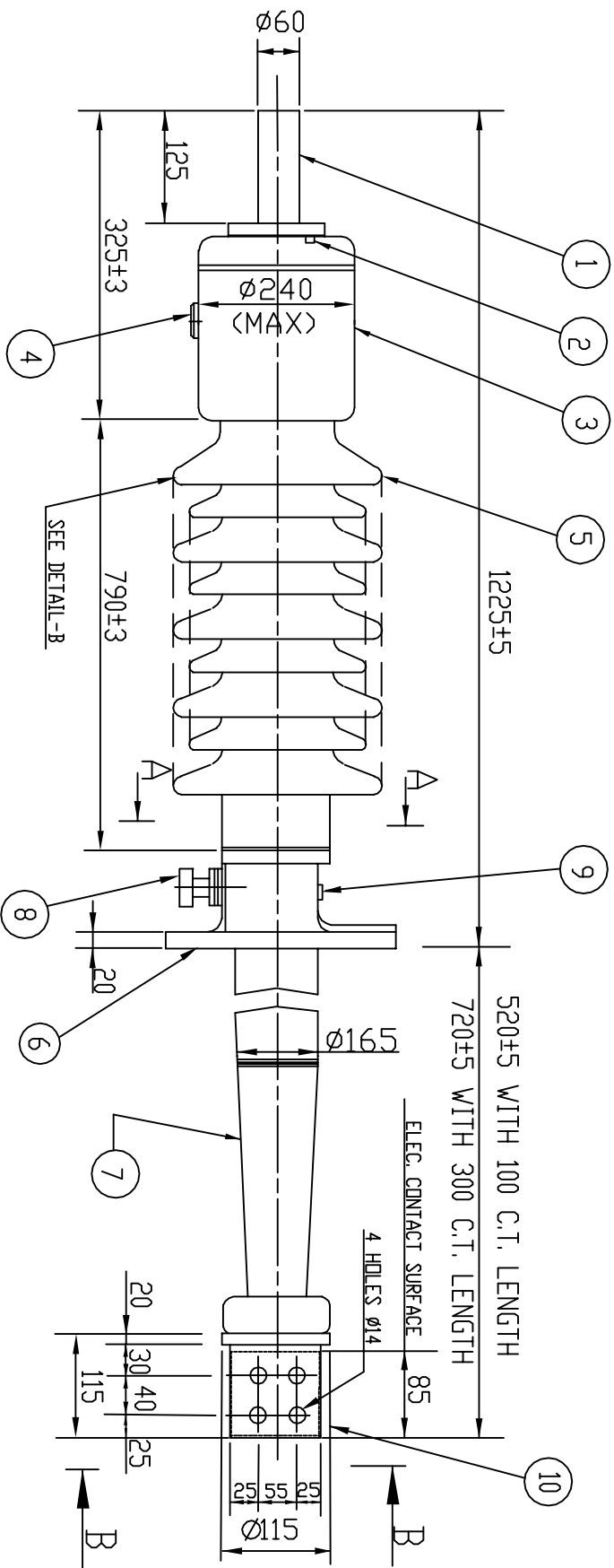


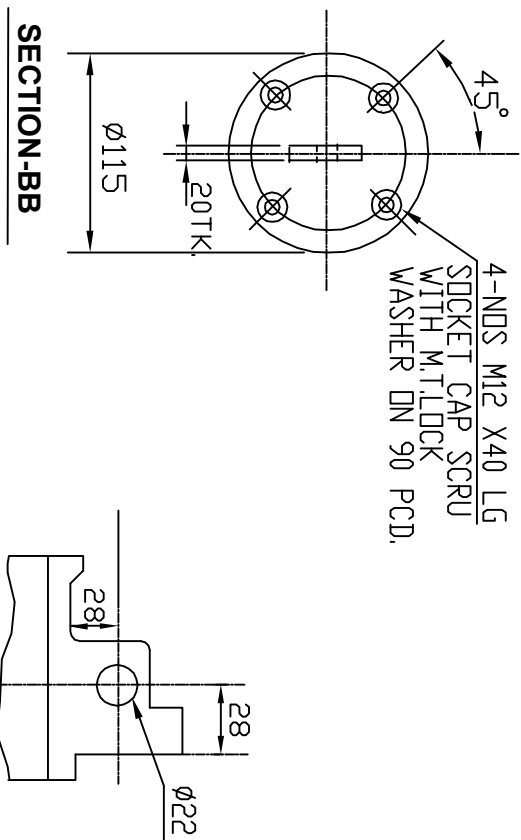
DRG NO. BCE-3-1181



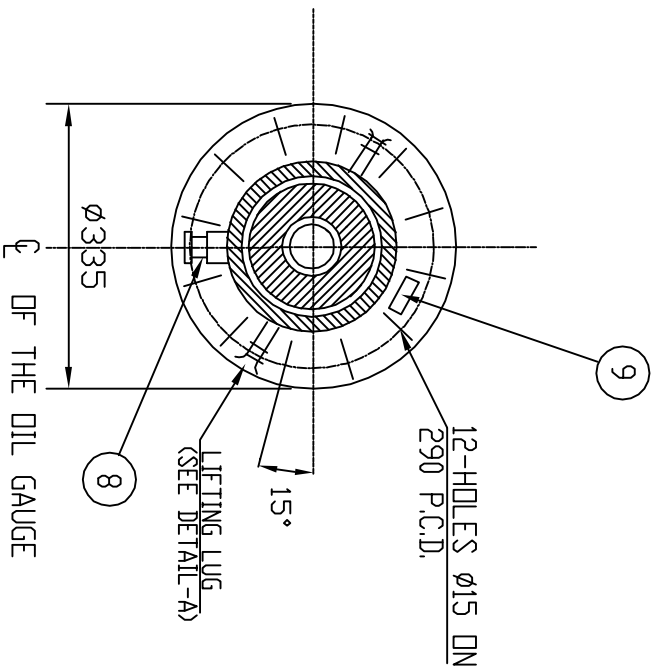
QTY	IT.	DESCRIPTION	MAT
1	01	TOP TERMINAL	COPPER
2	02	FILLING PLUG	H.T.STEEL
1	03	TOP CAP	AL. ALLOY
1	04	OIL LEVEL GAUGE	TOUGHENED GLASS
1	05	PORCELAIN INSULATOR	PORCELAIN
1	06	MOUNTING FLANGE	AL. ALLOY
1	07	BOTTOM PORCELAIN	PORCELAIN
1	08	TEST TAP	AL/NYLON
1	09	RATING PLATE	AL.ALLOY
1	10	BOTTOM TERMINAL	COPPER FORGING

TECHNICAL DETAILS:-

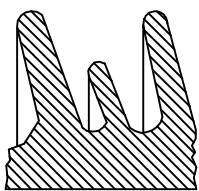
RATED VOLTAGE	: 72.5 kV
RATED CURRENT	: 3150 A
DRY PF WITHSTAND VOLTAGE ONE MINUTE	: 140 kV
BIL	: 325 kV/P
STANDARD APPLICABLE	: IS 2099/IEC137
MINIMUM CREEPAGE DISTANCE	: 1815 mm.
ALTITUDE	: \leq 1000 m
ANGLE OF MOUNTING	: \leq 30
APPLICATION	: DIL-AIR




DETAIL-A



SECTION-AA



DETAIL-B
(ALT.SHED PROFILE)

REV	DATE	ALTERED	DEPT BIE		SCALE	WEIGHT (KG.)	REF TO ASSY DRG	ITEM	REV
		CHECKED							
		TITLE							
		72.5 kV-3150A OIP							
		<u>CONDENSER BUSHING</u>							
		CARD					DRAWING NO.		
		CODE					BCE-3-1181		
		SHEET NO. 1					ND. OF SHEETS 1		